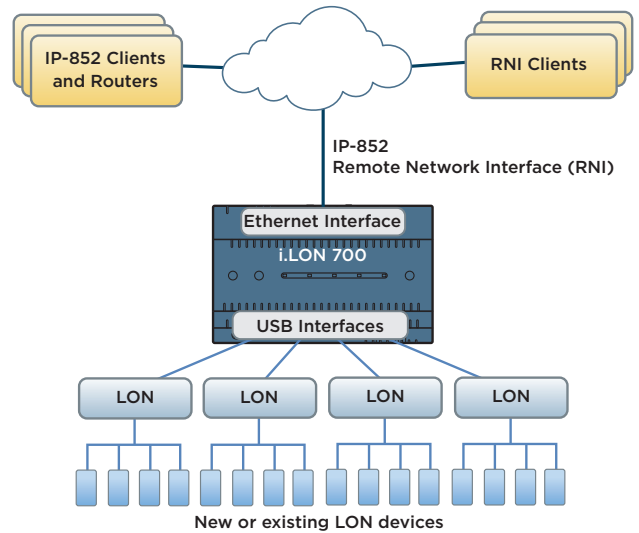


i.LON® 700 Edge Router and Network Interface



i.LON 700 connects LON devices to IP clients and IP devices

Product Description

The i.LON 700 is an ISO/IEC 14908-1, ISO/IEC 14908-4 and ANSI/CTA 709.7 compliant, LON/IP, LON and IP-852 multi-channel router and remote network interface (RNI) for process control, building automation, energy management, transportation systems control and telecommunications equipment management. It provides secure, reliable IP access from Ethernet workstations and servers to everyday devices like pumps, motors, valves, sensors, actuators and lights on LON FT, TP-1250 or PL channels. It also enables installation of tens of thousands of LON FT and TP-1250 devices using an Ethernet LON IP-852 backbone. Offering unparalleled packet throughput, multi-channel support, rugged construction, and simple commissioning, the i.LON 700 is ideal for demanding system management and control applications.

IP-852

When using IP-852 for Ethernet communication, the i.LON 700 is compatible with the i.LON 600 and also with IP-852 routers from other vendors, and any combination of up to 256 IP-852 routers can be used on the same channel.

Features and Benefits

- Multi-channel LON router and RNI for LON/IP-852 and up to 8 external LON FT, TP-1250 and PL network interfaces
- Free topology TP/FT-10 channel for the greatest wiring flexibility
- TP/XF-1250 channel for high performance industrial controls and high-speed backbone channels, providing high throughput
- Power line PL-20 channel for communication over existing power lines
- Provides internal LON routers for each attached network interface
- Remote network interface (RNI) for IP connection to an LNS®, OpenLNS® or IzoT® Net Server
- Compatible with IzoT® Net/LNS Installation Tools

Project:

Date:

Detail:

Product Specifications

Hardware and electrical specifications

| | |
|--------------------|---|
| Processor: | 800 MHz ARM Cortex A9 |
| Operating system: | Linux |
| Clock: | Internal, real time |
| Built-in memory: | 2 GB DDR3L SDRAM 8 GB eMMC flash memory |
| Memory expansion: | Micro SD card slot |
| Device support: | Up to 1,000 PL devices, 2,000 total devices; 100,000 datapoints |
| Input voltage: | 10.5-30VDC, 10W or isolated 12-30VAC, 12VA, 50/60Hz Note: Do not use with earth grounded 24VAC input. For proper wiring instructions see hardware user guide at www.echelon.com/docs/iot |
| Temperature range: | -40°C to +70°C |
| Surge protection: | EN 61000-4-5:2006, +/- 4KV |
| Mounting: | DIN 43880 8TE |
| Shock: | 100g or 1000m/s ² |

Vibration: 6g or 59m/s²

Wired interfaces

| | |
|------------------------------|------------------------------------|
| Gigabit Ethernet interfaces: | 1 RJ-45 jack for RNI and IP-852 |
| Type A USB 2.0: | 4 ports for LON network interfaces |
| Micro-B USB: | 1 console port |
| USB OTG: | 1 flash memory port |

External interface support

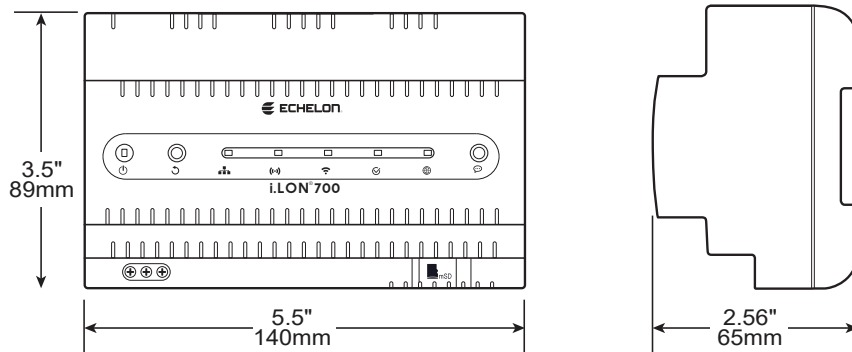
Supports up to 8 optional external interfaces, sold separately:

- 75060R-30 U60 TP-1250 DIN USB Network Interface
- 75060R-40 U60 FT DIN USB Network Interface
- 75070R-70 U70 PL DIN USB Network Interface

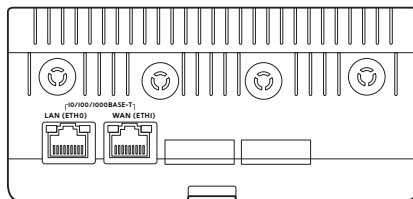
Safety, compliance and warranty

| | |
|-------------------|---|
| Agency approvals: | FCC, CE, IC, and CCC |
| EMC: | FCC Part 15 Class B, EN55022 Class B, EN55024, CISPR 24 Class B, CISPR 32 Class B, VCCI Class B |
| Warranty: | 1 year limited warranty |

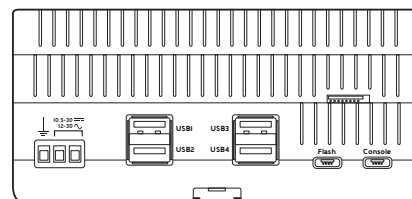
Dimensions, Mounting and Connections



i.LON 700 is designed for DIN-rail mounting



Top: Ethernet jack



Bottom: Power input terminals, USB ports, flash memory, and console interfaces

| Model # | Product Name | Product Description |
|------------|---|-------------------------------------|
| 72201R-140 | i.LON 700 Edge Router and Network Interface | Multi-channel IP-852 router and RNI |